

TEQSPORT 5TH GEN 4RUNNER BRAKE LINES INSTALLATION MANUAL



This Installation Manual is intended for the following models:	
2010-2024	Toyota 4Runner

PROLOGUE:

Study these instructions completely before proceeding to assembly. The installer must have a thorough knowledge of automotive systems operation. If unfamiliar with any of the concepts outlined in this instruction, we recommend the installation be completed by a qualified professional.

WARNING!

Extreme caution should be taken when performing maintenance or performance upgrades to your vehicle. Please observe and abide by any Warning or Caution labels placed on the various components and tools used when servicing your vehicle. If you have any questions regarding installation or the various components included with the TEQSPORT 5th Gen 4Runner Brake Lines, consult with a Professional Mechanic, or contact TEQSPORT for more information.

PARTS INCLUDED:

Item	Quantity	Description
1	2	Front Brake Line
2	1	Driver Rear Outer Brake Line
3	1	Passenger Rear Outer Brake Line
4	2	Rear Inner Brake Line
5	2	Banjo Bolt
6	4	Copper Crush Washer

TOOLS REQUIRED:

- Hydraulic Jack
- (2) 2-Ton (or greater) Jack Stands
- Ratchet
- Ratchet Extension(s)
- Assorted Metric Wrenches
- Assorted Metric Sockets
- Pliers
- Brake Bleeder
- Flared Wrenches
- Torque Wrench

SAFETY REQUIREMENTS:

- Always wear safety glasses and any necessary protective garments. If using any fluids, chemicals, or solvents, a respirator is recommended.
- Always turn the ignition to the OFF position and disconnect the NEGATIVE battery terminal.
- Always use properly rated jack stands when working under your vehicle.
- Always keep limbs and parts away from moving drivetrain parts.
- Only operate drivetrain in a safe space and well-ventilated areas.

BEFORE YOU BEGIN:

Remove contents from the TEQSPORT 5th Gen 4Runner Brake Lines and verify that ALL necessary hardware is present.

Use of a Flared Wrench on the OE Hardline Nuts is highly recommended to prevent rounding the nut.

Brake Fluid will damage painted surfaces. If spilled, clean up immediately with soapy water to prevent damage.

All *Figures* for the Front and Rear Outer Brake Lines are shown on the Passenger Side of the vehicle; the process is the same for the Driver Side of the vehicle.

TABLE OF CONTENTS

Front Brake Lines:.....4
Rear Outer Brake Lines.....8
Rear Inner Brake Lines 11

PROCEDURE:

1. Place the transmission in Park position (or in Reverse gear if equipped with a manual transmission). Apply the parking brake.
2. Loosen the Lug Nuts on all (4) four wheels but do not remove them yet.
3. Locate the proper jacking points on the vehicle's chassis (refer to the Vehicle's Owner's Manual). Raise and support the vehicle using a jack and jack stands.
4. Remove all (4) four wheels and lug nuts.

Front Brake Lines:

1. Remove the (2) two Retaining Clips from the Brake Line mounting points. Retain these clips. *Figure 1.*

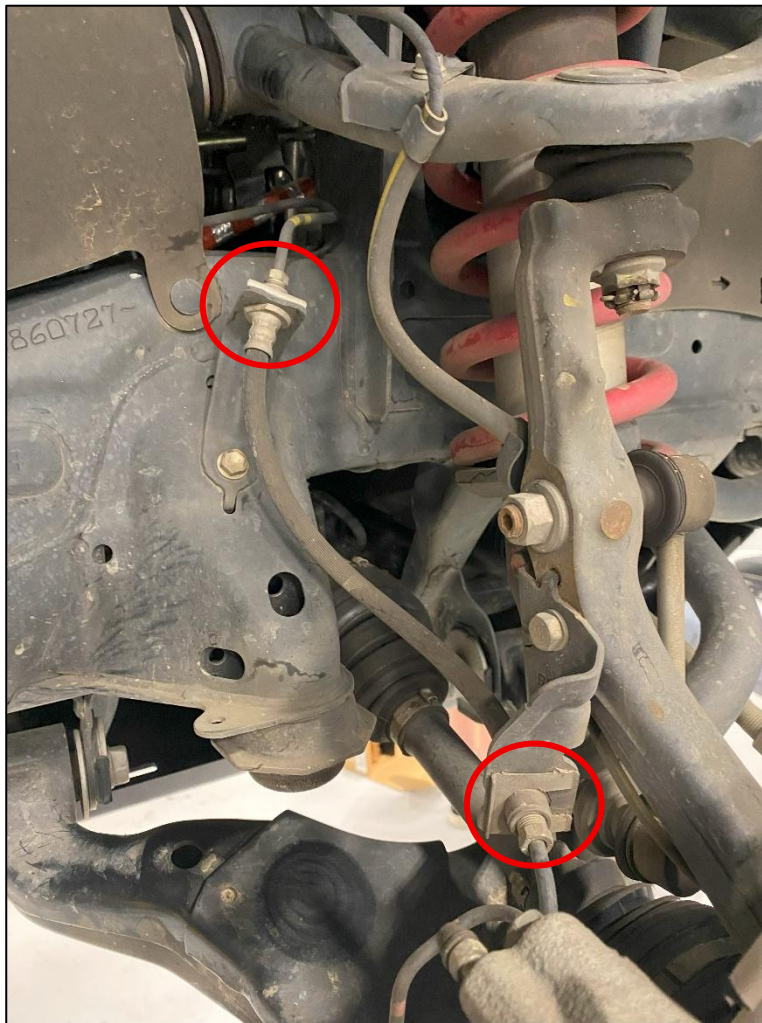


Figure 1

2. Disconnect the Soft Brake Line from the lower Hard Brake Line by loosening the Nut on Hard Line. If the line twists without loosening, a wrench may be needed to hold the Soft Brake Line in place. Brake Fluid will leak out, so prepare a bucket and rags. Clean any spilled Brake Fluid on painted surfaces immediately to prevent damage. *Figure 2.*

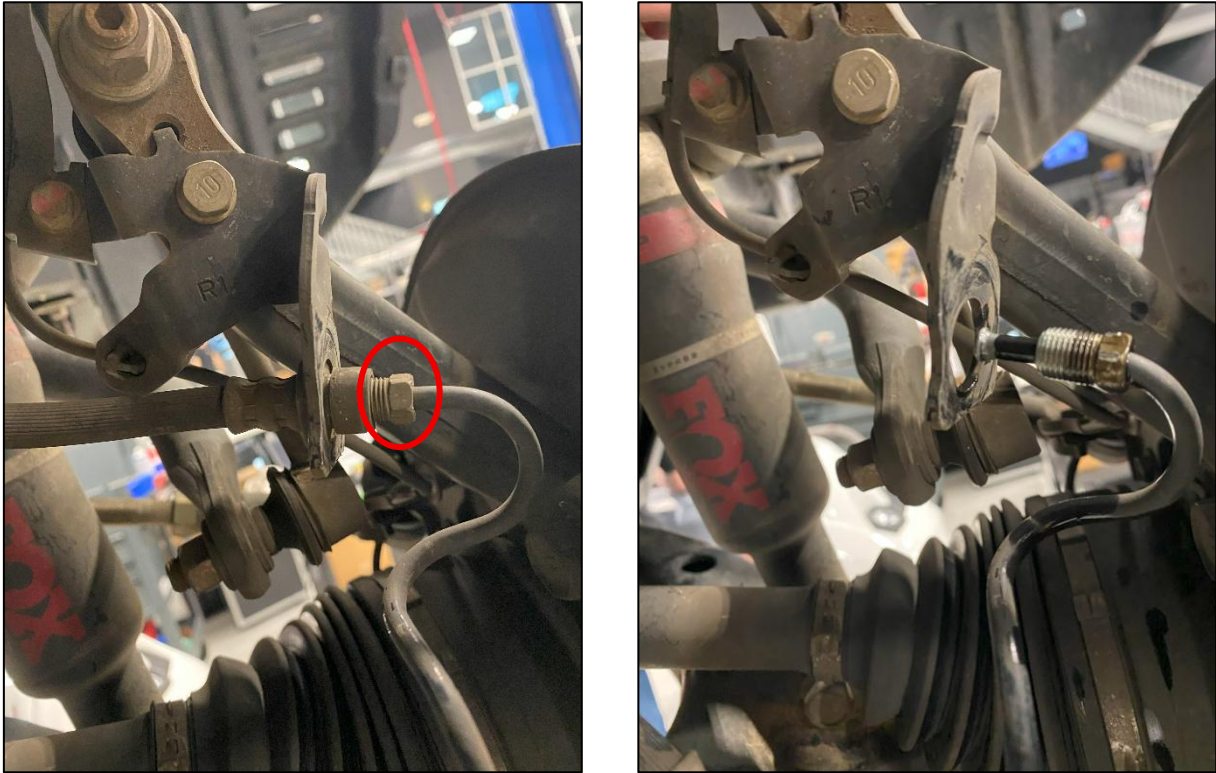


Figure 2

3. Disconnect the Soft Brake Line from the upper Hard Brake Line by loosening the Nut on the Hard Line. If the line twists without loosening, a wrench may be needed to hold the Soft Brake Line in place. Brake Fluid will leak out, so prepare a bucket and rags. Clean any spilled Brake Fluid on painted surfaces immediately to prevent damage. *Figure 3.*

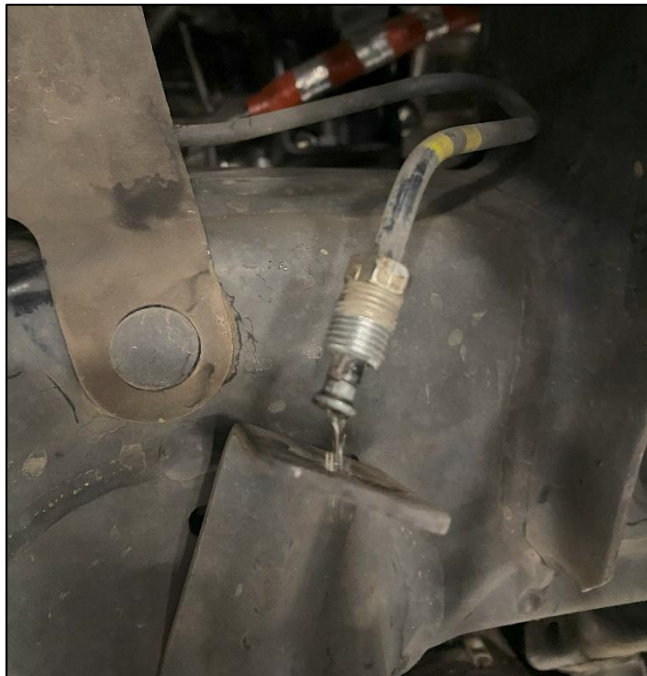


Figure 3

4. Locate (1) one TEQSPORT Front Brake Line, they are the *LONGER* of the Straight Brake Lines. Loosely connect (1) one end of the Line to the Hard Brake Line from the Caliper. *Figure 4.*



Figure 4

5. Connect the other end of the new Front Brake Line to the upper Hard Brake Line. *Figure 5.*

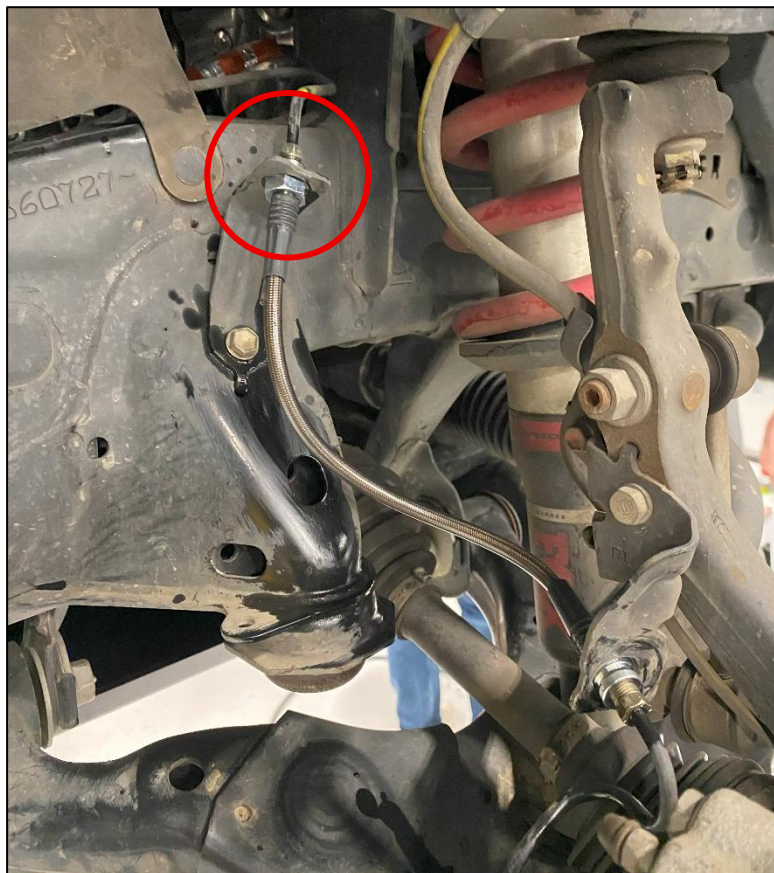


Figure 5

6. Using a wrench, secure the new Brake Line and tighten the nuts from the Hard Brake Lines to fully tighten the Lines together.
7. Reinstall the Retaining Clips from *Step 1* to secure the Brake Lines to the Brackets. *Figure 6*.



Figure 6

8. Clean up any spilled Brake Fluid.
9. Repeat *Steps 1-8* for the other side of the vehicle.
10. Bleed the Brakes in accordance with the Factory Service Manual once all other Brake Lines have been installed.

Rear Outer Brake Lines

1. Remove the (1) one Retaining Clip securing the Brake Line to the retaining Bracket. Retain the Clip as it will be reused. *Figure 7.*



Figure 7

2. Remove the OE Banjo Bolt and the Brake Line from the Rear Caliper. Brake Fluid will leak out, so prepare a bucket and rags. Clean any spilled Brake Fluid on painted surfaces immediately to prevent damage. *Figure 8.*

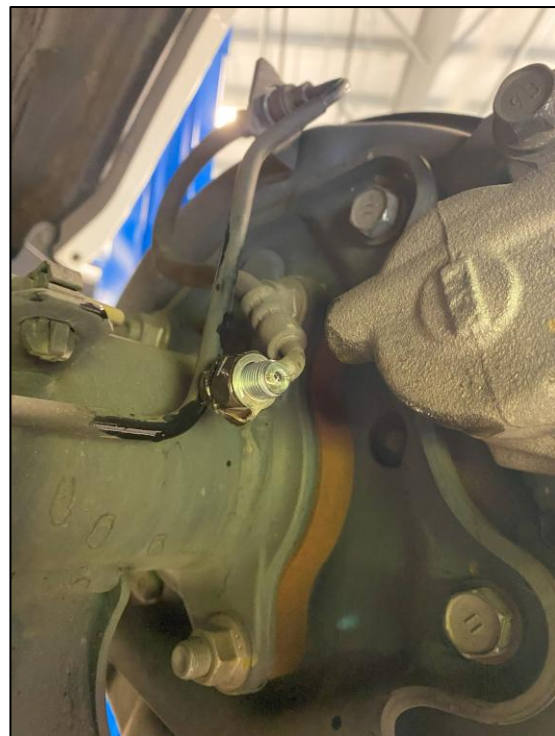


Figure 8

3. Disconnect the Soft Brake Line from the Hard Brake Line by loosening the Nut on the Hard Line. If the Line twists without loosening, a wrench may be needed to hold the Soft Brake Line in place. Brake Fluid will leak out, so prepare a bucket and rags. Clean any spilled Brake Fluid on painted surfaces immediately to prevent damage. *Figure 9.*



Figure 9

4. Locate the TEQSPORT Passenger Side Outer Rear Brake Line, (1) one Banjo Bolt and (2) two Copper Crush Washers. Match the Bent Fitting of the OE Brake Line to the new Line to determine which one is needed.
5. Place (1) one Copper Crush Washer on the Banjo Bolt then insert the Banjo Bolt through the Banjo Fitting end of the Brake Line. After, place another Crush Washer onto the other side of the Banjo Bolt. *Figure 10.*

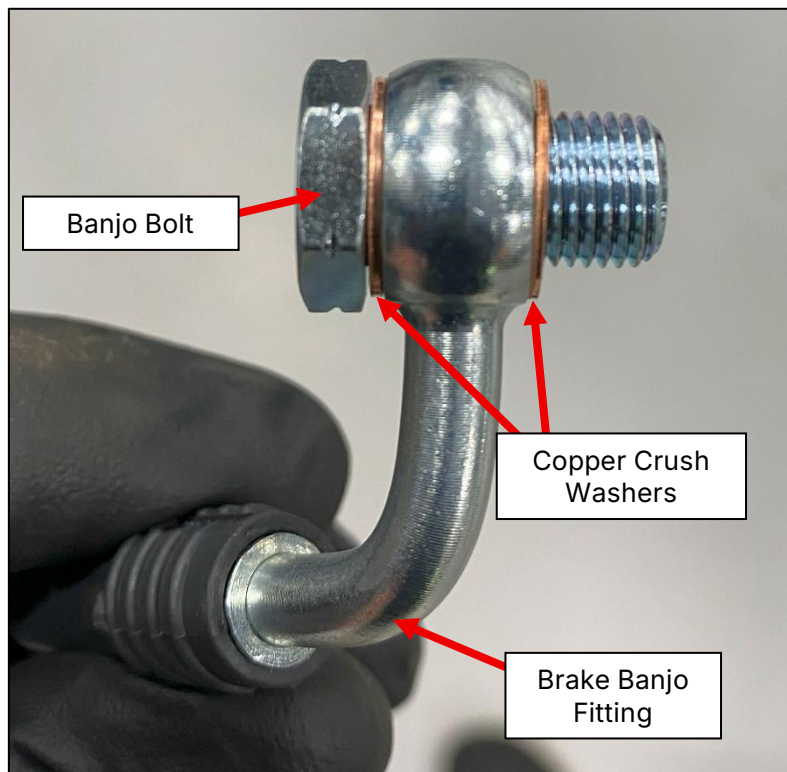


Figure 10

6. Install the Banjo Bolt and Brake Line into the Rear Caliper. There is a small channel in the Caliper that that bend of the Banjo Fitting will sit in. Torque the Banjo Bolt to 15 ft-lbs. *Figure 11.*
7. Connect the straight end of the new Brake Line to the Hard Brake Line. Using a wrench, secure the new Brake Line and tighten the nut from the Hard Brake Line until the Lines are secured together. *Figure 11.*



Figure 11

8. Reinstall the Retaining Clip removed in *Step 1* to secure the Brake Line to the Bracket. *Figure 12.*



Figure 12

9. Clean up any spilled Brake Fluid.
10. Repeat *Steps 1-9* for the Driver Side of the vehicle.
11. Bleed the Brakes in accordance with the Factory Service Manual once all other Brake Lines have been installed.

Rear Inner Brake Lines

1. Above the Differential, remove the (4) four Retaining Clips securing the Soft Brake Lines to the Mounting Brackets. *Figure 13.*

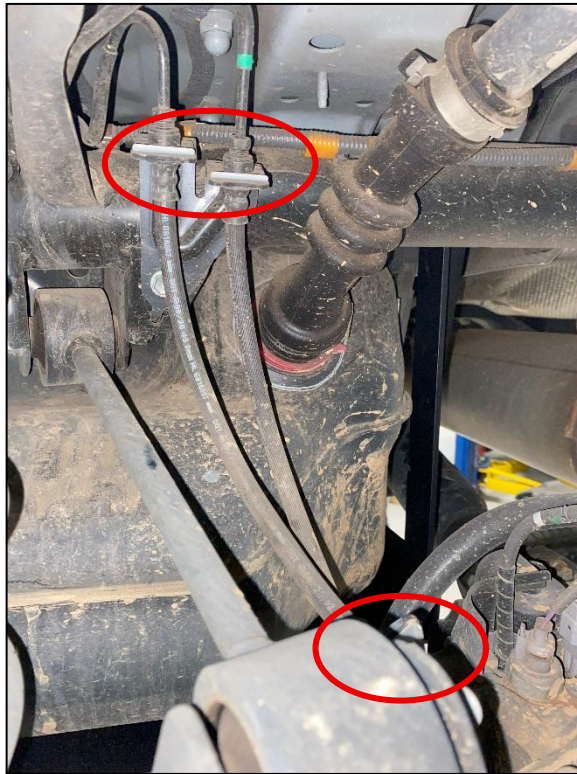


Figure 13

2. Disconnect (1) one of the Soft Brake Lines from the Upper Hard Brake Line by loosening the Nut on the Hard Line. If the Line twists without loosening, a wrench may be needed to hold the Soft Brake Line in place. Brake Fluid will leak out, so prepare a bucket and rags. Clean any spilled Brake Fluid on painted surfaces immediately to prevent damage.
3. Disconnect the Soft Brake Line from the Lower Hard Brake Line by loosening the Nut on the Hard Line. If the line twists without loosening, a wrench may be needed to hold the Soft Brake Line in place. Brake Fluid will leak out, so prepare a bucket and rags. Clean any spilled Brake Fluid on painted surfaces immediately to prevent damage.

4. Locate (1) one TEQSPORT Rear Inner Brake Line, they are the *SHORTER* of the Straight Brake Lines. Connect (1) one to the Lower Brake Hard Line. Use a wrench to secure the new Brake Line and tighten the Nut on the Hard Brake Line until the Lines are secured together. *Figure 14.*
5. Repeat *Step 4* to connect the other end of the TEQSPORT Brake Line to the Upper Hard Brake Line. *Figure 14.*
6. Reinstall the Retaining Clips removed in *Step 1* to secure the Brake Lines to the Brackets. *Figure 14.*



Figure 14

7. Repeat *Steps 1-6* for the other Inner Brake Line.
8. Bleed the Brakes in accordance with the Factory Service Manual once all other Brake Lines have been installed.

END

Additional Technical Support:
Contact TEQSPORT at info@teqsport.com
Or call 770-832-7184 between 9am and 6pm ET